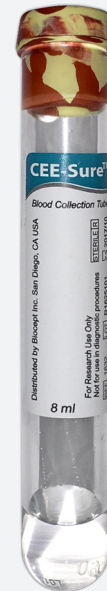


Introducing CEE-Sure™ Blood Collection Tube: One Tube for Both Cell-Free DNA and CTCs

Cell-Free DNA (cfDNA)

The CEE-Sure™ Blood Collection Tube (BCT) is designed to preserve and stabilize cell-free DNA for improved downstream analyses. In a conventional tube, nucleated blood cells lyse (breakdown) over time and release their genetic components into the blood, which increases background levels of cfDNA/cfRNA and mask the detection and quantification of abnormal genetic material. Conventional blood collection tubes contain only anti-coagulants aimed at preventing blood clotting, whereas CEE-Sure™ BCT prevents blood coagulation and preserves cells from lysing.



It's time to CEE clearly

Benefits

- Allows easy and cost effective shipment through ambient temperature stability (cfDNA up to 8 days)
- No preprocessing or centrifugation required prior to shipment
- Clinically effective in thousands of samples as part of Laboratory Developed Tests analyzing both ctDNA and CTCs
- Affordable solution

Potential Applications

With the CEE-Sure™ blood collection tube, preserve and stabilize cfDNA for:

- Life science research and clinical studies involving cfDNA
- Genomic profiling in cancer through analyses of cfDNA (including ctDNA), to aid in the detection of cancer mutations (BRAF, EGFR, KRAS, NRAS) and prediction of prognosis
- Noninvasive prenatal testing (NIPT) through measuring levels of fetal cfDNA in maternal plasma to detect fetal chromosomal abnormalities

To learn more and order, please visit www.biocept.com/cee-sure

With the CEE-Sure™ BCT, collect, preserve and analyze both cfDNA and CTCs.

CEE-Sure™ Blood Collection Tubes Are For Research Use Only.
Not for use in diagnostic procedures.

Customer Service 888-332-7729 • FAX 877-300-1761

Biocept, Inc.
5810 Nancy Ridge Drive, San Diego, CA 92121

www.biocept.com



Introducing CEE-Sure™ Blood Collection Tube: One Tube for Both Cell-Free DNA and CTCs

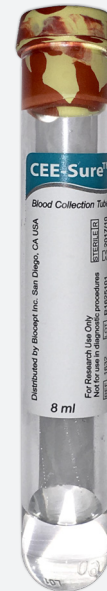
Circulating Tumor Cells (CTCs)

The CEE-Sure™ Blood Collection Tube (BCT) utilizes patented technology (Patent US9040255) that improves cell capture of CTCs, inhibits cell clumping, and prevents clogging of microfluidic devices. BCT is designed to prevent blood coagulation and preserve cells from lysing due to age or transport conditions.

It's time to CEE clearly

Benefits

- Allows easy and cost effective shipment through ambient temperature stability (CTCs up to 4 days)
- Improves visibility of cellular images for optimal analyzation
- Decreases the number of non-specifically bound cells
- Clinically effective in thousands of samples as part of Laboratory Developed Tests analyzing both ctDNA and CTCs
- Affordable solution



Without CEE-Sure™ BCT

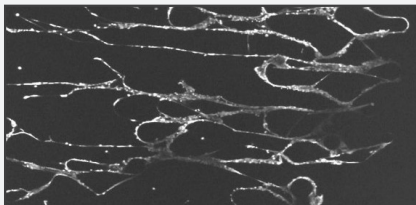


Image A. Clumped cells preserved with standard ACD tube in microfluidic device.

With CEE-Sure™ BCT

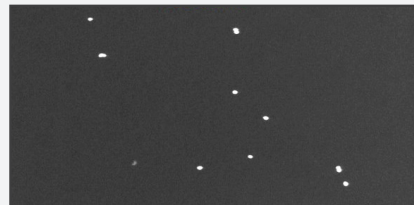


Image B. Rare cell capture with CEE-Sure™ tube in microfluidic device.

Potential Applications

With the CEE-Sure™ blood collection tube, preserve and stabilize CTCs for:

- Preservation of CTCs in whole blood at ambient temperature for future analysis
- Enhancing downstream testing of cellular components
- Maximizing microfluidic device usability

To learn more and order, please visit www.biocept.com/cee-sure

With the CEE-Sure™ BCT, collect, preserve and analyze both cfDNA and CTCs.

CEE-Sure™ Blood Collection Tubes Are For Research Use Only.
Not for use in diagnostic procedures.

Customer Service 888-332-7729 • FAX 877-300-1761

Biocept, Inc.
5810 Nancy Ridge Drive, San Diego, CA 92121

www.biocept.com

